

Artist in Focus 2016: Paul Klee

Paul Klee (b. December 18, 1879 – d. June 28, 1940) was a Swiss-German painter. His highly individual style was influenced by several movements over his lifetime. Klee taught at the Bauhaus with Wassily Kandinsky and wrote highly respected works about colour and form. (Wikipedia)

Who can enter? Foundation to Year 6 students learning German in AGTV member schools

Win Prizes! Prizes will be awarded by the jury in each year level.

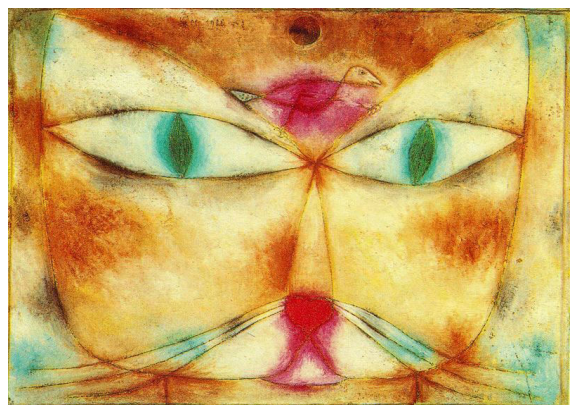
NB: Schools select TWO entries per year level for final judging

Deadline for receipt of entries: Friday 26th August, 2016

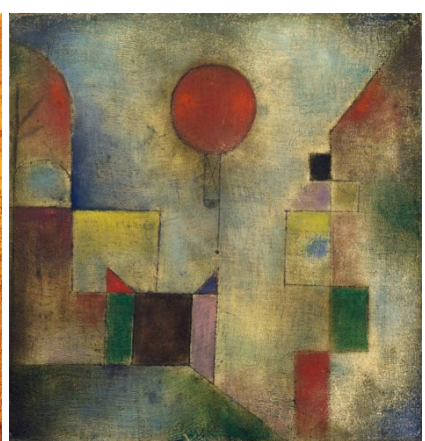
What do students do?

1. Produce an **artwork** inspired by the works of Paul Klee.
2. Give your artwork a title in German and write a brief artist's statement in English or German.
3. Write an *Elfchen* in German related to the works of the artist or your own artwork.

All entrants receive a **Certificate of Participation**.



Tip: Search images for 'Paul Klee' to gain an overall impression of the breadth of his style.



Ideas for the Classroom

1. Students **research the life and work of Paul Klee** to discover the range of his talents as an artist and the ideas driving his work. Do a search of Images and check they are from Paul Klee. Some sites:

- Paul Klee Centre in Switzerland: <http://www.myswitzerland.com/en-au/paul-klee-center-bern.html>
- Fish Facts - Slideshow: <http://www.slideshare.net/AliceFernndz/paul-klee-28367606>
- Ideas for Artworks <http://www.teachkidsart.net/category/famous-artists/klee-paul/>

2. Many schools collaborate with the Art Teacher to produce the artwork, This year students are also asked to write an artist's statement about their artwork. There will be a place on the Entry Form for this.

3. Work with the students to produce an Elfchen* in German.

*An 'Elfchen' is a simple poem consisting of 11 words. They may be single words or a phrase/sentence. There is a fixed structure:

word
word word
word word word
word word word word
word

For example: The first word could introduce the topic or idea or concept. The middle words explore this e.g. adjectives, nouns, or a phrase. The last word is a conclusion or comment.

4. Consider having a school art exhibition and invite families and School Council President or Principal to present awards. Take photos for the school newsletter to help make your program visible.



Images: Wikipedia



AGTV Competition Details: Kunst und Poesie 2016

Deadline for receipt of entries: Friday 26th August, 2016

Teachers download entry forms from the AGTV website under Noticeboard

How to enter?

1. The **Contact teacher** from the **AGTV member school** registers the participation of the school in the competition online via our Events website. <https://aogtovi.wildapricot.org/>
NB: Participation certificates will be sent to schools registered and forwarding entries.
2. **Students** produce an artwork /3D model inspired by Paul Klee and compose an *Elfchen* in German. Both elements constitute one entry.
Tip: Teachers often work with the specialist Art teacher.
3. **Each school** selects **two entries per year level** to enter the state competition. Not all year levels may be involved. That is a local school decision.
4. Ask **students** selected from each year level to complete a **Student Entry Form** giving permission to enter, publish and exhibit the photos. Hardcopies of the student forms are collated and kept by the teacher/school.
5. **Teachers** photograph or scan each artwork to save individually as a jpg file with the **student's year level and name**. For example: Y6-Amanda-Keller-Art.
6. **Teachers** scan the *Elfchen* and save the file with the **year level and name** as above e.g. Y6-Amanda-Keller-Poem.
7. **Teachers a)** complete the **school entry form** and email this form to the dedicated email: kunstpoesie@agtv.vic.edu.au along with **b)** forward all entries AGTV with the school name and year attached levels in the header e.g. Einstein PS Year 1.

NB: *Files of entries not correctly labelled may be excluded from judging.*

Judging and Public Exhibition

It is anticipated that selected entries will be exhibited at an AGTV event or collated for an online digital exhibition.

Prize Winners and Participation Certificates

Winners will be announced at the Presentation Evening in November. Place and time TBC.
A certificate proforma will be emailed to all schools with entries to print for all participants.

NB: Please **email questions** to the Committee at agtv@agtv.vic.edu.au, as the dedicated email above is only for the receipt of entries and will not be checked regularly.